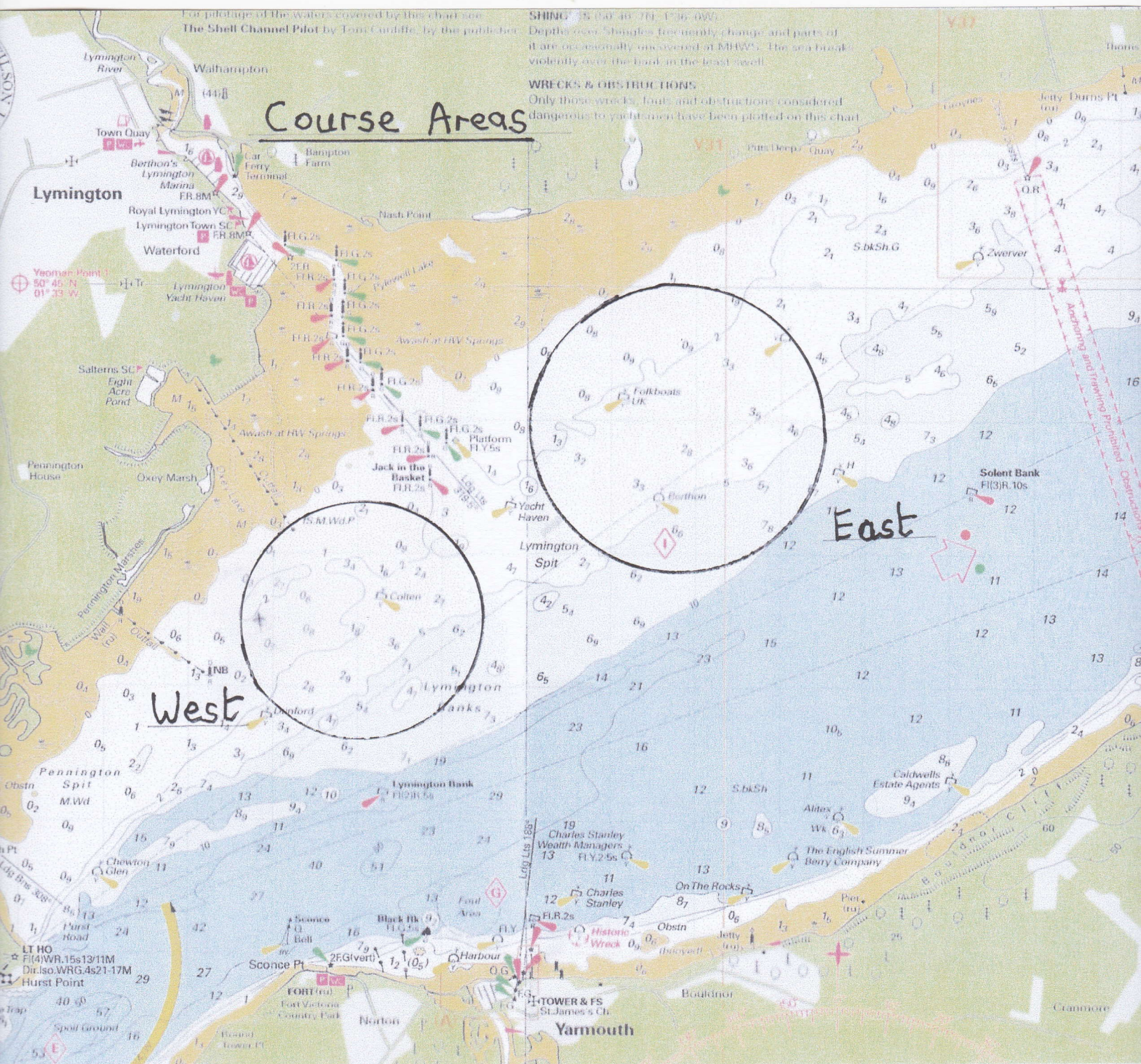


For pilotage of the waters covered by this chart see
The Shell Channel Pilot by Tom Curdiffe, by the publisher.

SHOALS 15 (04, 40, 70, 136, 090)
Depths over Shingles frequently change and parts of
it are occasionally uncovered at MHWS. The area breaks
violently over the bar in the best swell.

WRECKS & OBSTRUCTIONS
Only those wrecks, fouls and obstructions considered
dangerous to yachtsmen have been plotted on this chart.

Course Areas



West

East

Lymington

Yarmouth